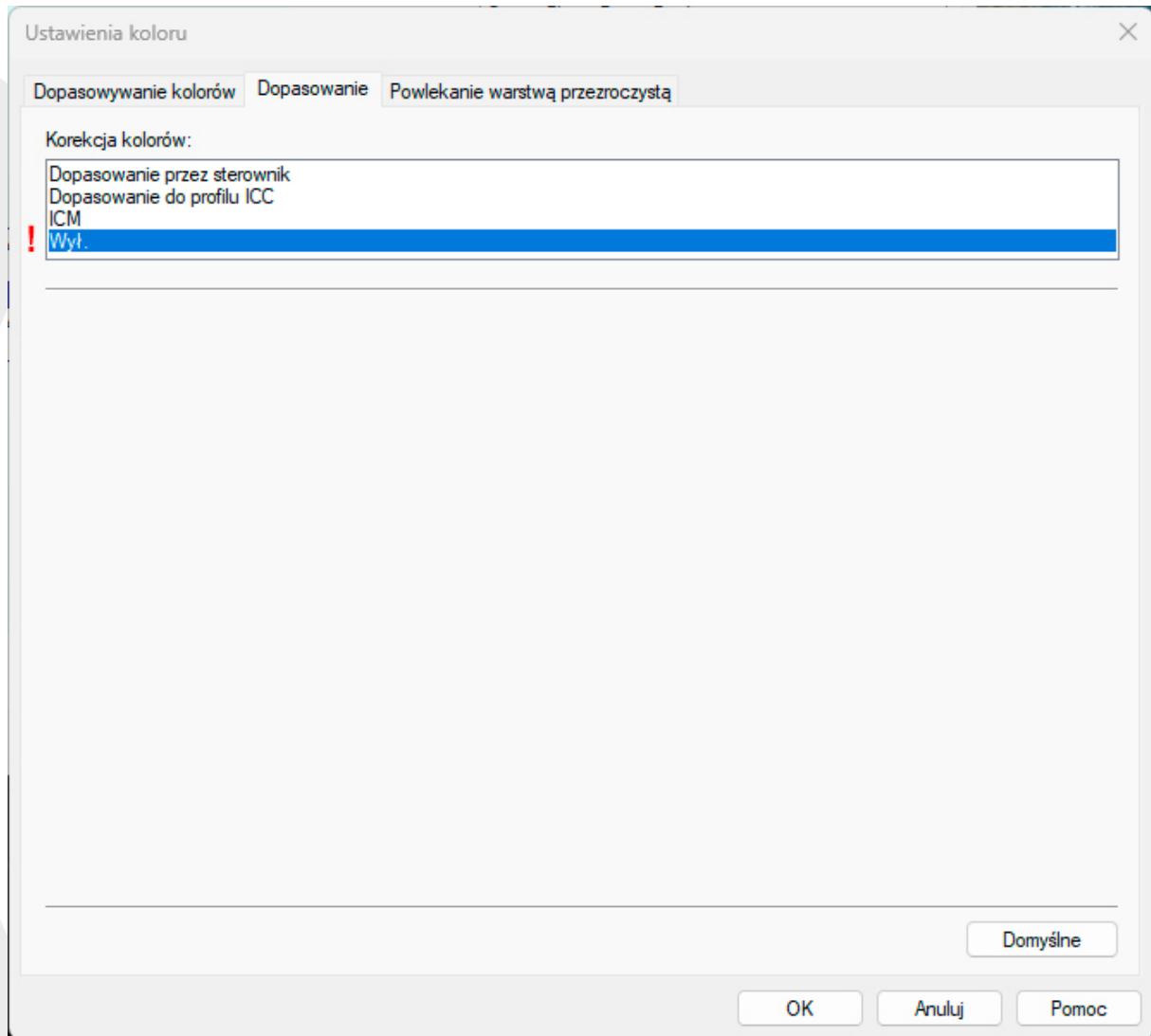


NIP: 7820020927, REGON: 008492310, KRS: 0000101015 Sąd Rejonowy w Poznaniu XXI Wydział Gospodarczy KRS, BDO: 000008157, Kapitał zakładowy: 4.500.000 PLN  
Konta bankowe: Santander Bank Polska PLN: PL04 1090 1463 0000 0001 0225 9493, EUR: PL84 1090 1463 0000 0001 1025 5121 (SWIFT/BIC - WBKPPLPP)

- In the **Color Handling** section, select **Printer Manages Colors** (1).
- **Color Conversion Method** should be **Relative Colorimetric** (2).
- Check that the option **Scale to Fit Media** is **not** selected (!).
- Enter the printer settings by clicking the **Print Settings** button (3).



- NIP: 7820020927, REGON: 008492310, KRS: 0000101015 Sąd Rejonowy w Poznaniu XXI Wydział Gospodarczy KRS, BDO: 000008157, Kapitał zakładowy: 4.500.000 PLN  
Konta bankowe: Santander Bank Polska PLN: PL04 1090 1463 0000 0001 0225 9493, EUR: PL84 1090 1463 0000 0001 1025 5121 (SWIFT/BIC - WBPPLPP)

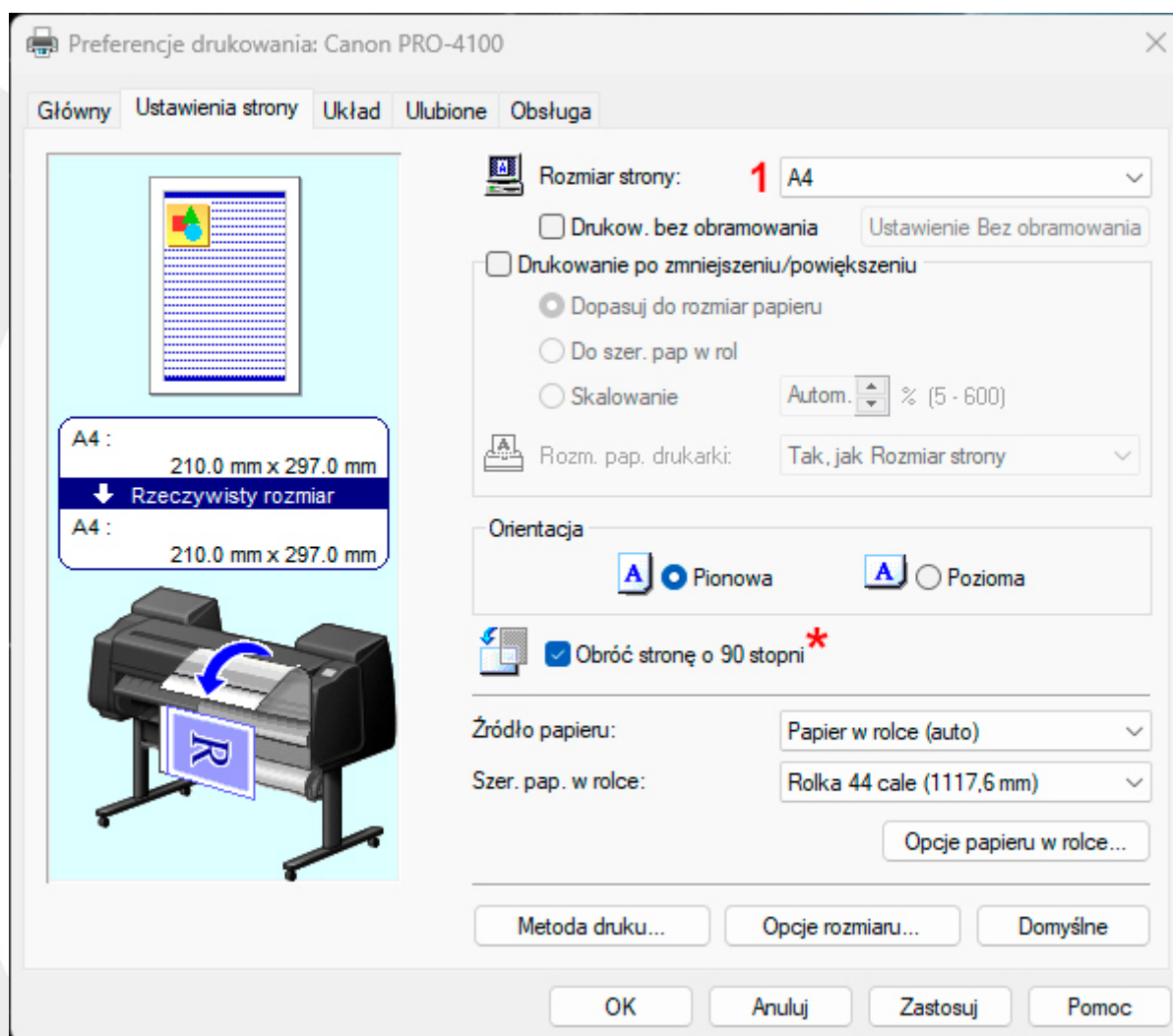


In the **Adjustment** tab, select the **Off** option (!).

Return to the main driver window and select the **Page Setup** tab (4).

**Falter Sp. z o. o.**

ul. Poznańska 69, 62-045 Pniewy / Poland  
telefon: +48 61 29 38 300, e-mail: [biuro@falter.eu](mailto:biuro@falter.eu)  
[www.falter.eu](http://www.falter.eu), [www.inkjetsolution.eu](http://www.inkjetsolution.eu)



Select the **A4** format in the **Page Size** selection menu (1).

To save paper, you can check the option **Rotate 90 degrees** (\*).



## Epson Printer Driver Settings

Preferencje drukowania: EPSON SC-P7000 Series

Main Page Layout Utility

Select Setting: Current Settings Save/Del...

Media Settings

1 Media Type: Premium Luster Photo Paper (260) Custom Settings...

2 Color: Color Photo Black Ink

3 Print Quality: Max Quality Paper Config...

4 Mode: ☐ Automatic ☒ Custom

! Off (No Color Adjustment) Advanced...

Paper Settings

Source: Roll Paper Roll Paper Option...

Size: 5 A4 210 x 297 mm User Defined...

☐ Borderless ☐ Save Roll Paper

☐ Print Preview

☐ Layout Manager

Cartridge Option  
Light Light Black

Reset Defaults Version 6.80

OK Anuluj Zastosuj Pomoc

- Select the **Media Type (1)** appropriate for the paper loaded into the printer.
- In the **Color** option, check if **Color** print is selected **(2)**.
- In the print quality menu, select the **Max Quality** available **(3)**.
- In the **Color Management Mode (4)** selection menu, select the **Custom** option and from the dropdown list, select **Off (No Color Adjustment) (!)**.
- Select the **A4** format for the page size **(5)**.

## Rules for Describing Printed Color Charts

On the back of each printout, add the following information:

- **Printer Model**
- **Type of ink used** (e.g., OEM, Solution)
- **Substrate type** (e.g., Solution Luster RC 255)
- **Email address** to which the completed profiles should be sent.

Please package the finished printouts in an A4 envelope, **necessarily stiffening it** with cardboard inserts, for example, and send it to the address:

Falter Sp. z o.o.

ul. Poznańska 69

62-045 Pniewy

With the note: **Profile ICC - Do not bend!!**

### Falter Sp. z o. o.

ul. Poznańska 69, 62-045 Pniewy / Poland  
telefon: +48 61 29 38 300, e-mail: [biuro@falter.eu](mailto:biuro@falter.eu)  
[www.falter.eu](http://www.falter.eu), [www.inkjetsolution.eu](http://www.inkjetsolution.eu)