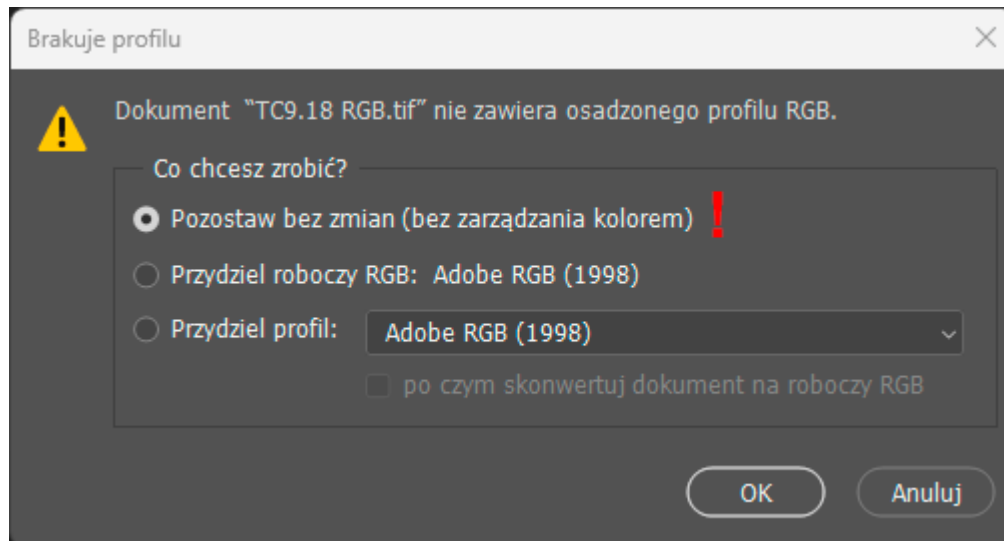


Making a printout to generate the ICC profile

- Download file TC9.18 RGB from website <https://www.falter.eu/wp-content/uploads/2021/01/TC9.18-RGB.zip>
- Unzip and open this file in Adobe Photoshop
- If the following message appears, leave the file as is (!)

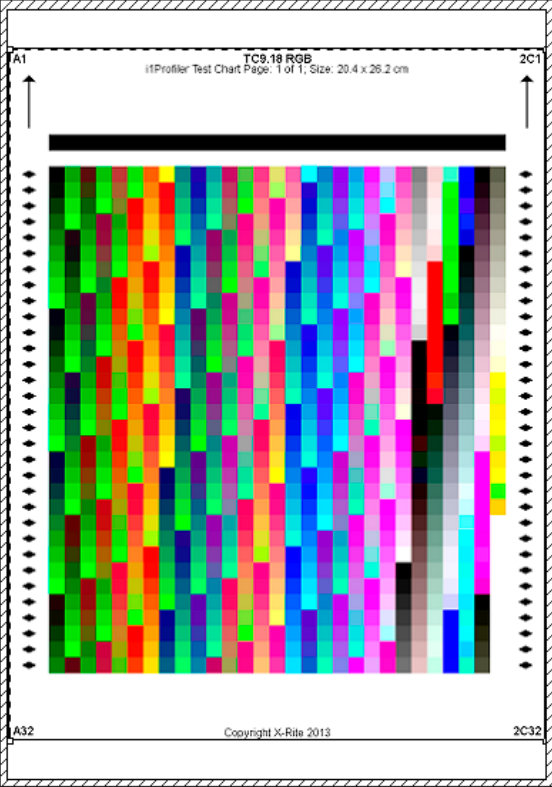


- In Adobe Photoshop, select the print command in the select the appropriate settings dialog box
 - In the Color Handling section, select - *Printer Managed Colors* (1)
 - Color Conversion Method - *Relative Colorimetric* (2)
Make sure you don't have the Scale to fit on paper option checked (!)
 - Access the printer settings by clicking the Print Settings button (3)

Ustawienia druku programu Photoshop

20,39 cm x 29,67 cm

A1 TC9.18 RGB i1Profiler Test Chart Page: 1 of 1, Size: 20.4 x 29.2 cm 2C1





A32 Copyright X-Rite 2013 2C32

Kolory wydruku próbnego
 Alarm przestrzeni kolorów
 Pokaż biały papier


Konfiguracja drukarki

Drukarka: Canon PRO-4100

Kopie: 1 Ustawienia druku... 3

Układ:  

Zarządzanie kolorami

 Korzystając z okna dialogowego ustawień drukowania, włącz zarządzanie kolorami w drukarce.

Profil dokumentu: RGB bez znacznika

Obsługa kolorów: Kolory zarządzane w drukarce 1

Profil drukarki: Canon IJ Color Printer Profile 2015

Standardowa metoda drukowania

Metoda konwersji kolorów: Relatywna kolorymetryczna 2

Kompensacja punktu czerni

Opis

Położenie i rozmiar

Położenie

Środek Góra: 1,446 Lewy: 0,017

Przeskalowany rozmiar wydruku

Skala: 100% Wysokość: 26,19 Szerokość: 20,39

Skaluj, aby zmieścić na papierze Rozdzielczość druku: 101 ppi

Drukuj zaznaczony obszar Jednostki: Centymetry

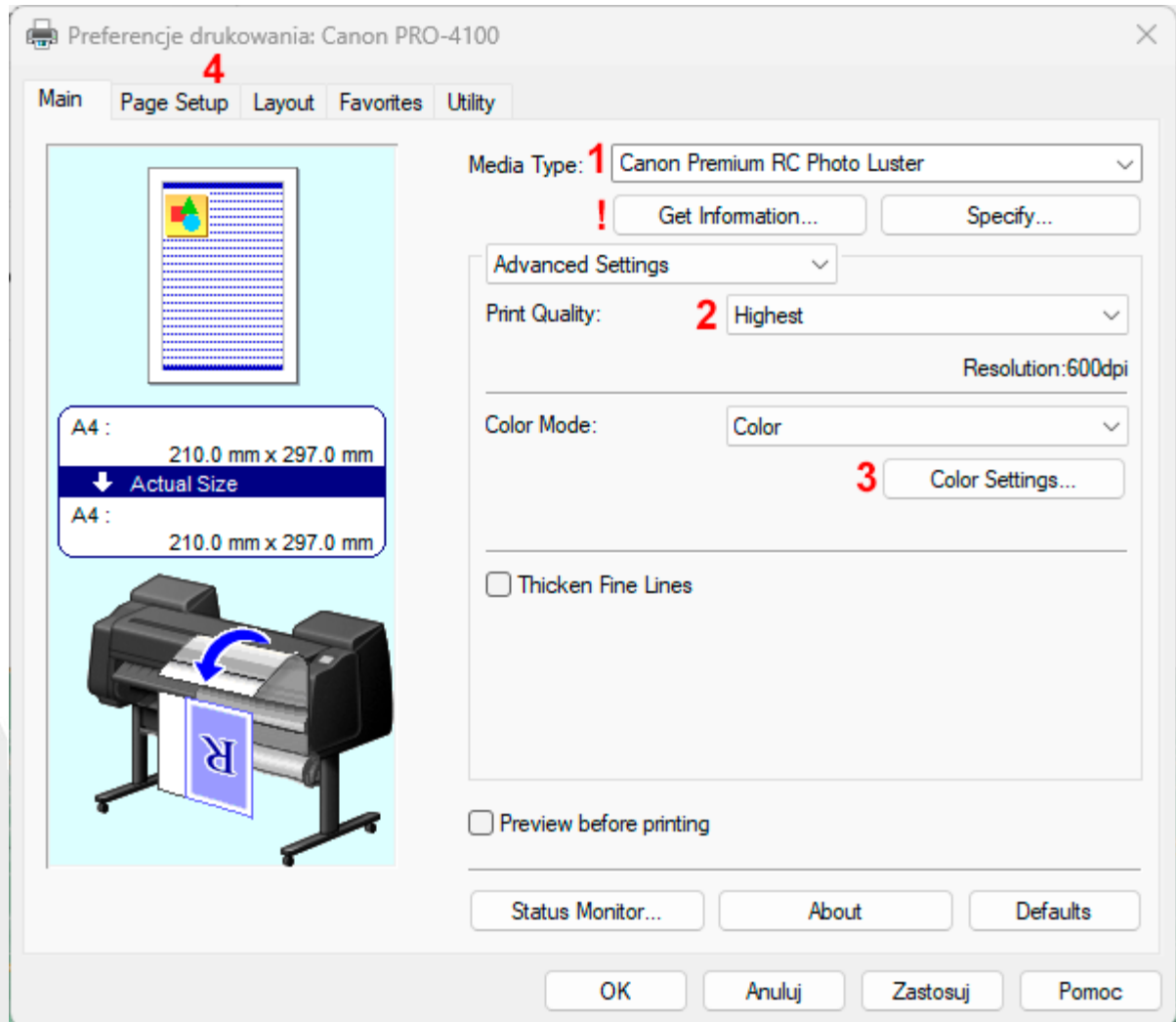
> Znaczniki drukowania

> Funkcje

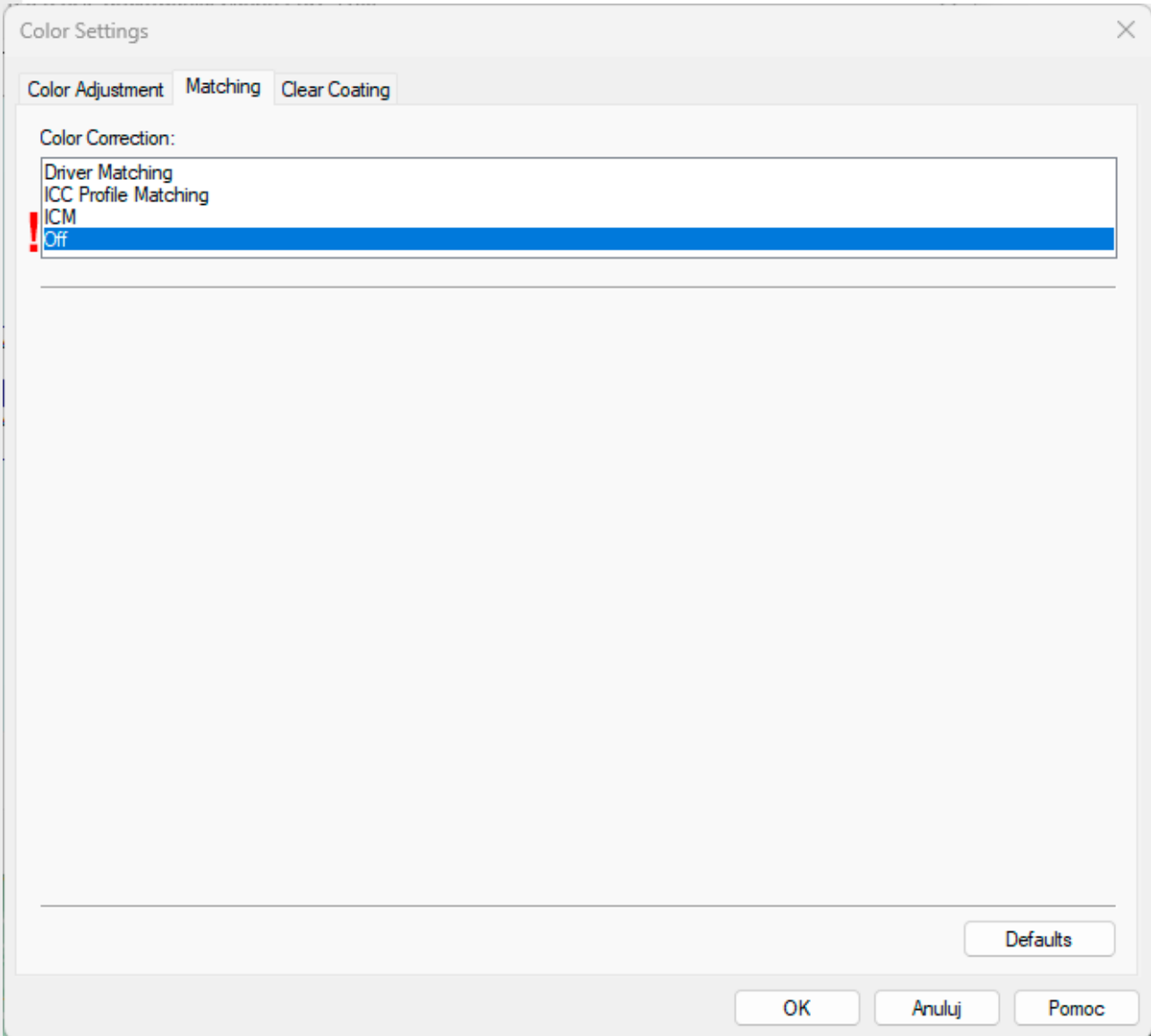
> Opcje PostScript wyłączone

Anuluj Gotowe Drukuj

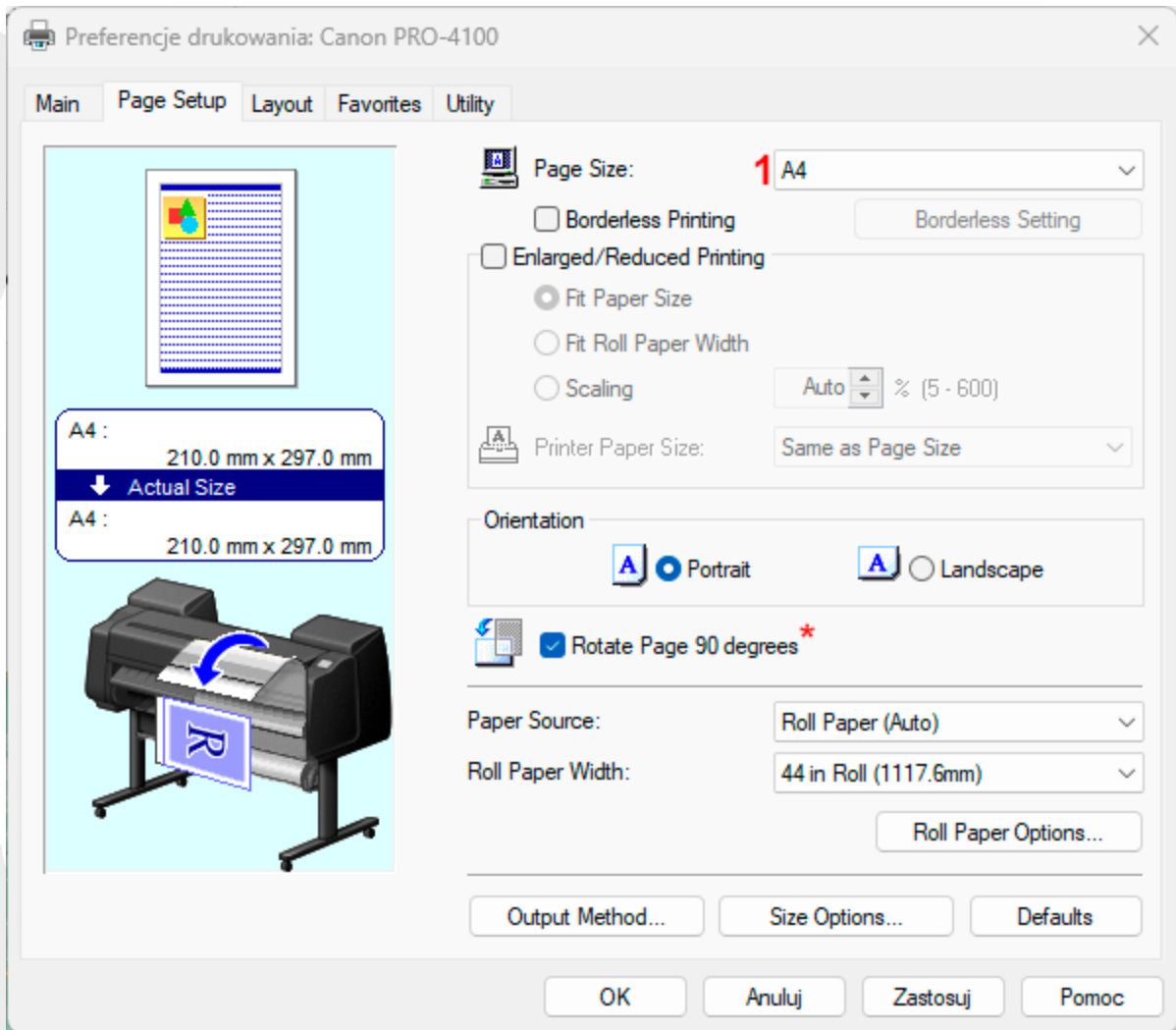
Driver settings for Canon printer



- Set the media type to match the paper loaded in the printer (1)
- When the correct type of substrate has been selected when loading the paper, you can click the *Get Information* button to retrieve it from the printer (!)
- Select the highest print quality (2)
- Go to the color settings by clicking the *Color settings* button (3)

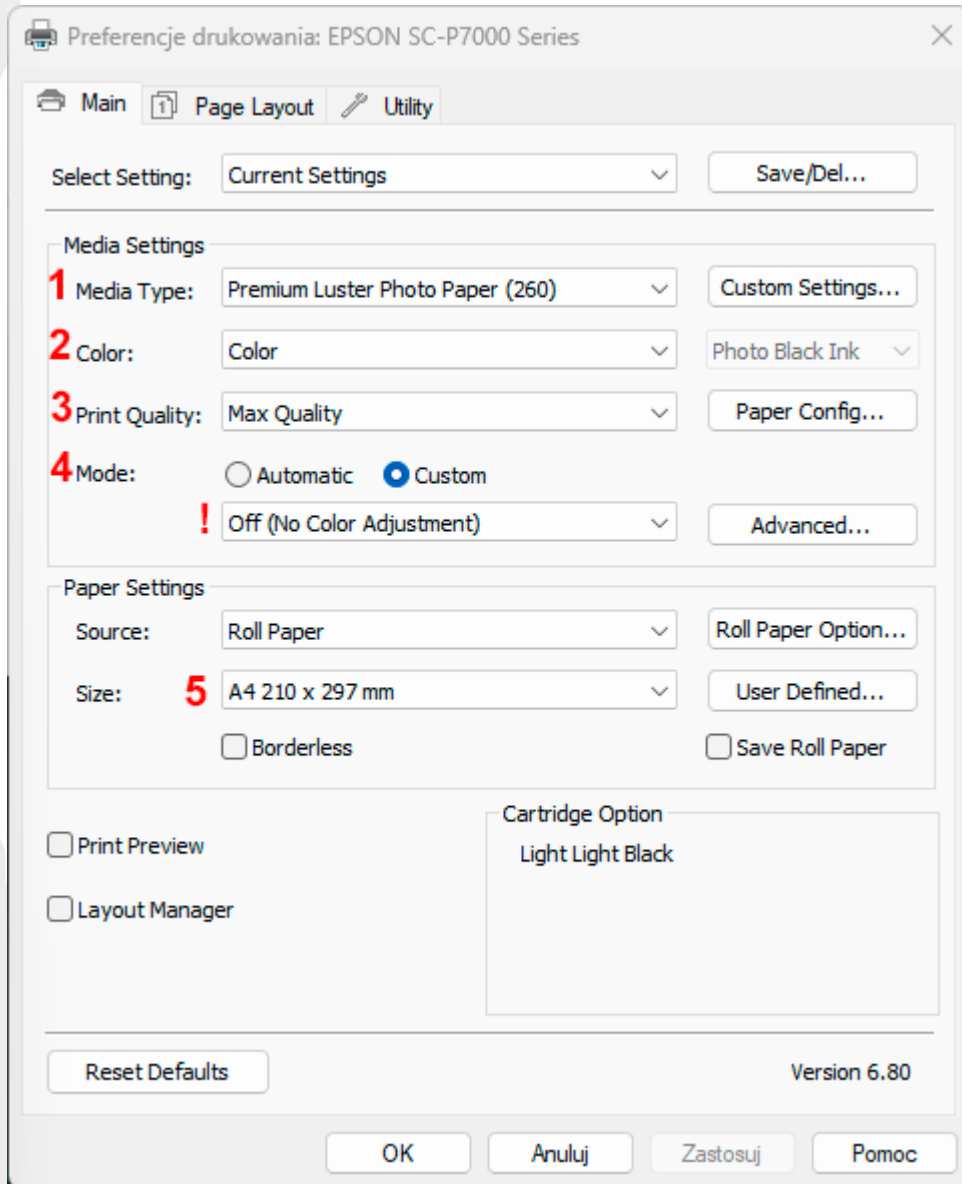


- In the Matching tab, select Disabled (!)
- Return to the main driver window and select the Page Setup tab (4)



- Select A4 in the page size selection menu (1)
- To save paper, you can check *Rotate Page 90 Degrees* (*)

Ustawienia sterownika dla drukarek firmy Epson



- Select the *Media Type* appropriate for the paper loaded in the printer **(1)**
- In the *Color* option, make sure that color printing is selected **(2)**
- In the *print quality* menu, select the maximum available quality **(3)**
- In the color management mode selection menu **(4)**, select the *Custom* option and select *Off (No Color Adjustment)* from the drop-down list **(!)**
- Select A4 as the page size **(5)**

Principles of description of printed color charts

On the reverse side of each printout, add the following information:

- Printer model
- Type of ink used (for example: OEM, Solution)
- Type of substrate (for example: Solution Luster RC 255)
- E-mail address to which the completed profiles are to be sent.

Please pack the printouts in an A4 envelope, stiffening it with, for example, cardboard and send it to the following address:

Falter Sp. z o.o.

Ul. Poznańska 69

62-045 Pniewy

With a note: ICC profiles - do not bend !!

Falter Sp. z o. o.

ul. Poznańska 69, 62-045 Pniewy / Poland
telefon: +48 61 29 38 300, e-mail: biuro@falter.eu
www.falter.eu, www.inkjetsolution.eu