

Professional Ink and Papers

SOLUTION®
ENJOY PRINTING

October 2021

PRODUCT CATALOG

www.falter.eu



SOLUTION WATER BASED PIGMENT INKS

SOLUTION *GRAPHIC*

Water based pigment inks for Epson printers



Solution GRAPHIC is a high quality truly encapsulated pigment ink, dedicated for Epson SureColor printers series T and P. It has a wide color gammut, excellent color rendition and enhanced black density. This 100% pigmented ink is extremely long-term stable and has a good gloss level for papers with glossy surface. Mixed operation with OEM ink is possible, it is not necessary to clean the print paths (tubes) when changing the ink. You can switch to Solution ink from Epson color by color.

Application: Photography, graphics, reproduction, archive prints

Compatibility: Epson SureColor T and P series, Epson Stylus Pro

Availability: Bottles and single use cartridges

SOLUTION *PROOF*

Water based pigment inks for Epson printers



Solution PROOF ink was special designed for professional print studios and print houses which specialize in proof printing. This pigment based ink has a very wide color gamut and are extremely UV resistant. It is 100% compatible with OEM ink. You can switch to **Solution PROOF** ink from Epson color by color without any cleaning procedure. Even the same ICC profiles can be used.

Application: Proof printing, reproduction, archive prints

Compatibility: Epson SureColor T and P series, Epson Stylus Pro

Availability: Single use cartridges

SOLUTION WATER BASED PIGMENT INKS

SOLUTION **DTG** *Water based pigment inks for DTG printers*



Solution DTG is an ink dedicated for clothing printers. It provides exceptional quality and durability and allows you to print on many types of fabrics, both light and dark.

Application: Direct to garment printing

Compatibility: various DTG printers (Brother, Epson, ect.)

Availability: Foil bags and single use cartridges

SOLUTION **PROx** *Water based pigment inks for Canon printers*



Solution PROx is a high quality pigment ink for Canon IPF series and W printers , in order to obtain prints with a stable color, great saturation and intense black in each batch. Solution PROx ensures long-term durability of prints and does not cause clogging of the print head.

Application: Photography, prints and high quality graphics

Compatibility: Canon IPF series and W pigment printers

Availability: Bottles and single use cartridges

SOLUTION WATER BASED DYE INKS

SOLUTION *CLi* *Water based dye inks*



Solution CLi is a new generation dye ink for dry minilabs from Fujifilm, Epson and Noritsu. It is distinguished by a natural color scheme. The highest standards of cleanliness have been applied in the production. Further each lot is tested for its quality, especially in terms of color gamut. **Solution CLi** ink is also designed to be chemically compatible with OEM inks - this means that they are miscible. Correct colors are guaranteed by our ICC profiles.

Application: Photography, graphic, posters, flyers, catalogues, home prints and high speed printing

Compatibility: Epson SureLab, Fujifilm Frontier, Noritsu Dry Lab, Epson L Series, Artisan and Stylus Photo printers

Availability: Bottles and single use cartridges

SOLUTION *DYE* *Water based dye inks for Epson printers*



Solution DYE is the perfect ink for greater gloss, more chroma and shadow details. This professional dye ink is especially well suited for glossy short term work. Because of its brightness, short drying times and low price it is very popular in the advertisement branch.

Application: Posters, flyers, catalogues, presentations, trade shows, scrapbooks, hanging signs and banners in supermarkets

Compatibility: Epson Stylus Pro, SureColor printer

Availability: Bottles and single use cartridges

SOLUTION ECO-SOLVENT AND SCREEN PRINTING INKS

SOLUTION *ECO-SOLVENT* Eco-solvent inks



Solution ECO-SOLVENT ink has a very durable resistance against scratches. It can be used for high-resolution indoor signs and also for outdoor billboards. Because of its fast drying high printing speeds can be used.

Application: Photography, advertisement, in-door and out-door exposition

Compatibility: Epson, Roland, Mutoh, Mimaki

Availability: Bottles and single use cartridges

SOLUTION *HD* Water based screen printing inks for Epson printers



Solution HD is an UV absorbing, high-density, black dye ink for inkjet film positives used in screenprinting. Ink works with all screenprint inkjet film RIP's, and is compatible with all brands of inkjet film. **Solution HD** ink blocks the maximum amount of UV light (up to 4.5 UV density) and can be printed in up to 10 layers.

Application: Screenprint inkjet film positives

Compatibility: Water based dye and pigment Epson printers

Availability: Bottles and single use cartridges

SOLUTION UV INKS

SOLUTION *UV* Inks for UV printers

Solution UV an UV curable ink with a great color gammut and the ability to print on a wide range of flexible materials. It provides instant drying, super sharp print quality, great fade and water resistance in outdoor conditions.

Application: Vinyl, textle, wallpaper, canvas, non-woven fabric, flex banner, mesh, one way vision.

Compatibility: Mutoh, Mimaki, Fortune, ect.

Availability: Bottles and single use cartridges

REFILL ACCESSORIES

Refillable cartridges for Epson and Canon printers



Our reusable ink cartridges are made of high-quality PP which can be easily filled and refilled over and over again. Because you may need only one refillable cartridge set for the life of your printer, you will be dramatically reducing the amount of plastic cartridges being thrown out finding their way into your local landfills.

Refill accessories



50ml slip tip syringe with 3" blunt tip needle, priming tip, gloves.

Funnel



Set of funnels to pour the ink into the cartridges. For each color a separate funnel should be used.

Funnel with integrated filter



This funnel has a special 5 µm strainer to protect the ink against contamination during the filling of cartridges.

Chip resetter for refillable carddriges



Some refillable cartridges needs to be resetted with a resetter when the chip schows empty.




WATER BASED INKJET MATERIALS



Solution Prestige is a range of microporous and coated professional photo papers designed for high quality printouts, like photography, reproductions, posters, signage etc., on small and large format printers.






Luster RC
255, 300 gsm

	Luster RC 255	Luster RC 300
Weight:	255 gsm	300 gsm
Thickness:	265 µm	300 µm
Opacity:	96%	97%
Media color:	Ultra white	Ultra white
 Rolls  Sheets  Pigment / Dye water based ink		






Glossy RC
255, 300 gsm

	Glossy RC 255	Glossy RC 300
Weight:	255 gsm	300 gsm
Thickness:	260 µm	300 µm
Opacity:	96%	97%
Media color:	Ultra white	Ultra white
 Rolls  Sheets  Pigment / Dye water based ink		






Semi Matt RC
255 gsm

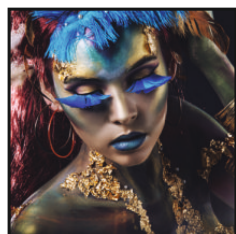
Weight:	255 gsm
Thickness:	267 µm
Opacity:	96%
Media color:	Ultra white
 Rolls  Sheets  Pigment / Dye water based ink	



**Semi Matt RC
Warmtone**
255 gsm

Weight:	255 gsm
Thickness:	267 µm
Opacity:	96%
Media color:	Warmtone
 Rolls  Sheets  Pigment / Dye water based ink	

WATER BASED INKJET MATERIALS



Silk RC
270 gsm

Weight: 270 gsm

Thickness: 260 µm

Opacity: 96%

Media color: Ultra white



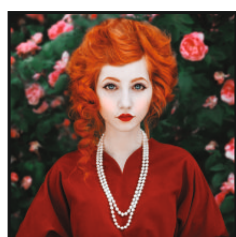
Sheets



Rolls



Pigment / Dye water based ink



Pearl RC
290 gsm

Weight: 290 gsm

Thickness: 290 µm

Opacity: 97%

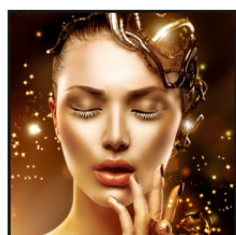
Media color: Ultra white



Rolls



Pigment / Dye water based ink



Metallic Glossy
255 gsm

Weight: 255 gsm

Thickness: 260 µm

Opacity: 98%

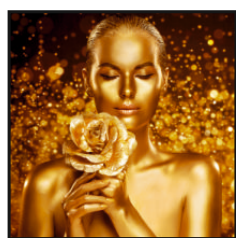
Media color: Metallic, warm white



Rolls



Pigment / Dye water based ink



Crystal Metallic
255 gsm

Weight: 255 gsm

Thickness: 260 µm

Opacity: 98,5%

Media color: Metallic, ultra white



Rolls



Pigment / Dye water based ink



Proof FOGRA
255 gsm

This paper is approved by Fogra as a semi matte proofing paper. Designed for contract proofs and professional color management applications.

Weight: 255 gsm

Thickness: 267 µm

Opacity: 94%

Media color: White



Sheets



Rolls



Pigment / Dye water based ink



WATER BASED INKJET MATERIALS



Solution Daily are papers that you can use in photo studios and advertising agencies every day. Designed for all full color applications and graphics. The quality is at its best for photographics, presentations, photorealistic printouts as well as poster and signprinting in premium quality and double sided prints.



Luster RC

240 gsm

Weight: 240 gsm

Thickness: 240 µm

Opacity: 94%

Media color: Ultra white

 Rolls  Sheets  Pigment / Dye water based ink



Glossy RC

240 gsm

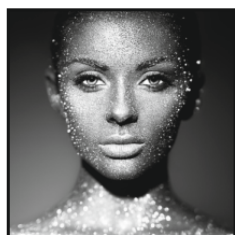
Weight: 240 gsm

Thickness: 240 µm

Opacity: 94%

Media color: Ultra white

 Rolls  Sheets  Pigment / Dye water based ink



Glacier

260 gsm

Weight: 260 gsm

Thickness: 245 µm

Opacity: 96%

Media color: Ultra white

 Rolls  Pigment / Dye water based ink



Matt

230 gsm

Weight: 230 gsm

Thickness: 295 µm

Opacity: 98%

Media color: Ultra white

Available: 90 gsm, 120 gsm, 170 gsm,
230 gsm, 220 gsm Duo

 Rolls  Sheets  Pigment / Dye water based ink

WATER BASED INKJET MATERIALS



Satin RC Duo
Album
280 gsm

Weight: 280 gsm

Thickness: 260 µm

Opacity: 96%

Media color: Ultra white

 Sheets  Pigment / Dye water based ink



Solution Daily
Sample Pack

Sample Pack A4 contains 10 sheets, 2 pcs. of each Solution Daily paper:

- Luster RC 240 gsm
- Glossy RC 240 gsm
- Matt 230 gsm
- Glacier 260 gsm
- Satin RC Duo - Album 280 gsm

FREE SAMPLES OF SOLUTION PAPERS

The pattern book contains Solution water based inkjet materials.

Contact us and get it for free!

Phone: +48 786 180 004, e-mail: office@inkjetsolution.eu



WATER BASED INKJET MATERIALS



Solution FineArt papers and canvas guarantee archival standards. It's premium inkjet coating meets the challenging requirements of modern imaging systems and highest industry standards regarding density, color gamut, color graduation and image sharpness.

Common applications include: Photographic and fine art reproduction, digital art, black & white and color photography, limited edition prints, presentation prints for display purposes and exhibitions, albums, greeting cards, etc.



Baryta

300 gsm

Weight:	300 gsm
Thickness:	330 µm
Opacity:	99%
Whiteness:	104%
Media color:	Ultra white
Material:	100% α-cellulose

 Rolls  Sheets  Pigment / Dye water based ink



Radiant White

270 gsm

Weight:	270 gsm
Thickness:	450 µm
Opacity:	99%
Whiteness:	91,5%
Media color:	White
Material:	100% cotton

 Rolls  Sheets  Pigment / Dye water based ink



Photo White

270 gsm

Weight:	270 gsm
Thickness:	440 µm
Opacity:	99%
Whiteness:	102%
Media color:	Ultra white
Material:	100% α-cellulose

 Rolls  Sheets  Pigment / Dye water based ink

WATER BASED INKJET MATERIALS



Photo White Satin

270 gsm

Weight: 270 gsm

Thickness: 420 µm

Opacity: 99%

Whiteness: 101%

Media color: Ultra white

Material: 100% α-cellulose

 Rolls  Sheets  Pigment / Dye water based ink



White Velvet

270 gsm

Weight: 270 gsm

Thickness: 460 µm

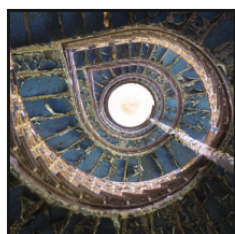
Opacity: 99%

Whiteness: 93%

Media color: White

Material: 25% cotton, 75% α-cellulose

 Rolls  Sheets  Pigment / Dye water based ink



Ceramic Fibre

300 gsm

Weight: 300 gsm

Thickness: 440 µm

Opacity: 99%

Whiteness: 104%

Media color: Bright white

Material: 100% α-cellulose

 Rolls  Sheets  Pigment / Dye water based ink



Smooth Royal

300 gsm

Weight: 300 gsm

Thickness: 500 µm

Opacity: 99%

Whiteness: 104%

Media color: Bright white

Material: 100% cotton

 Rolls  Sheets  Pigment / Dye water based ink

WATER BASED INKJET MATERIALS



Raffael Canvas
450 gsm

Weight:	450 gsm
Thickness:	580 µm
Opacity:	99%
Whiteness:	109%
Media color:	Bright white
Material:	Canvas polycotton

 Rolls  Sheets  Pigment / Dye water based ink



Solution Fine Art
Sample Pack

Sample Pack A4 contains 14 sheets, 2 pcs. of each Solution Fine Art paper and canvas:

- Baryta 300 gsm
- Photo White 270 gsm
- Radiant White 270 gsm
- Photo White Satin 270 gsm
- White Velvet 270 gsm
- Ceramic Fibre 300 gsm
- Smooth Royal 300 gsm

FREE SAMPLES OF SOLUTION PAPERS

The pattern book contains Solution water based inkjet materials.

Contact us and get it for free!

Phone: +48 786 180 004, e-mail: office@inkjetsolution.eu



WATER BASED INKJET MATERIALS



Solution Canvas is a range of cotton, polycotton and polyester mixture canvas with matt and glossy surfaces, which provides excellent image sharpness and optimum color gradation.

Designed for photos, graphics and fine art reproductions.



Polycotton Matt

280 gsm

Weight:	280 gsm
Thickness:	350 µm
Opacity:	85%
Media color:	White
Material:	70% cotton, 30% polyester

 Rolls  Pigment / Dye water based ink



Polycotton Matt

380 gsm

Weight:	380 gsm
Thickness:	400 µm
Opacity:	85%
Media color:	White
Material:	35% cotton, 65% polyester

 Rolls  Pigment / Dye water based ink



Cotton Matt

390 gsm

Weight:	390 gsm
Thickness:	540 µm
Opacity:	90%
Media color:	White
Material:	100% cotton

 Rolls  Pigment / Dye water based ink



Polycotton Matt

360 gsm

Weight:	360 gsm
Thickness:	480 µm
Opacity:	85%
Media color:	White
Material:	65% cotton, 35% polyester

 Rolls  Pigment / Dye water based ink

WATER BASED INKJET MATERIALS



Polyester Matt
240 gsm

Weight:	240 gsm
Thickness:	320 µm
Opacity:	90%
Media color:	Ultra white
Material:	100% polyester

 Rolls  Pigment / Dye water based ink



Polyester Matt
Adhesive
400 gsm

Weight:	400 gsm
Thickness:	380 µm
Opacity:	97%
Media color:	White
Material:	100% polyester

 Rolls  Pigment / Dye water based ink



Polycotton Glossy
400 gsm

Weight:	400 gsm
Thickness:	520 µm
Opacity:	95%
Media color:	Warmtone
Material:	35% cotton, 65% polyester

 Rolls  Pigment / Dye water based ink



Solution Canvas
Sample Pack

Sample Pack A4 contains 12 sheets, 2 pcs. of each Solution Canvas paper:

- Canvas Polycotton Matt 280 gsm
- Canvas Polycotton Matt 360 gsm
- Canvas Polycotton Matt 380 gsm
- Canvas Polycotton Glossy 400 gsm
- Canvas Cotton Matt 390 gsm
- Canvas Polyester Matt 240 gsm

ACCESSORIES FOR CANVAS PRINTS



Canvas Stretcher Bars



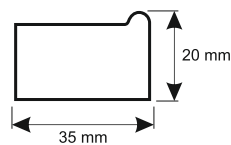
Stretcher Bars for canvas prints. Each frame comes with 8 splines, for each corner two pieces. The stretcher bars are made of pine wood, dried to 8-10% humidity. The rounded edges allow a tight stretch and an even surface. They are very easy to handle, no need for any special tools to put the frame together.

Available width:

20 cm, 30 cm, 40 cm, 50 cm, 60 cm, 70 cm, 80 cm, 90 cm, 100 cm, 110 cm, 120 cm

If you need different sizes, please contact us.

Frame profile:



Solution Varnish



The Solution Varnish is a special lacquer, to protect the surface of canvas inkjet prints.

It protects the surface against sun's rays and makes it water-resistant. Additionally the varnish preserves the canvas from cracking and the colors from fading.

The water based Solution Varnish is very easy to use.

With a foam roll, it spreads perfectly on the canvas surface.

After drying, it leaves a waterproof, smooth surface.

Variants:	Glossy and Satin
-----------	------------------

Capacity:	250 ml, 500 ml, 1000 ml
-----------	-------------------------

Foam Mini Roller



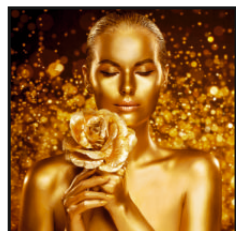
Foam Mini Roller with frame and paint tray for applying Solution Varnish on canvas prints.



Solution Dry Lab stands for a wide variety of high quality microporous and special coated matt paper for inkjet drylabs, such as Noritsu, Fujifilm Frontier, Epson Surelab.

All Solution Dry Lab papers are specially designed to produce brilliant prints with vivid colors, high color consistency and gamut. Fine Art Matt 230 and Matt Canvas Texture 230 do meet criteria for permanence according to ISO 9706.

	Glossy RC 240 gsm	Weight: 240 gsm Thickness: 240 µm Opacity: 94% Media color: Ultra white	Rolls Pigment / Dye water based ink
	Luster RC 240 gsm	Weight: 240 gsm Thickness: 240 µm Opacity: 94% Media color: Ultra white	Rolls Pigment / Dye water based ink
	Glossy RC 250 gsm	Weight: 250 gsm Thickness: 252 µm Opacity: 86% Media color: Ultra white	Rolls Pigment / Dye water based ink
	Luster RC 250 gsm	Weight: 250 gsm Thickness: 253 µm Opacity: 86% Media color: Ultra white	Rolls Pigment / Dye water based ink
	Metallic Glossy 255 gsm	Weight: 255 gsm Thickness: 260 µm Opacity: 98% Media color: Metallic, warm white	Rolls Pigment / Dye water based ink



Crystal Metallic

255 gsm

Weight:	255 gsm
Thickness:	260 µm
Opacity:	98,5%
Media color:	Metallic, ultra white

 Rolls  Pigment / Dye water based ink

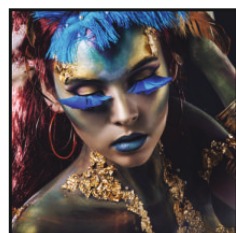


Photo Silk RC

255 gsm

Weight:	255 gsm
Thickness:	240 µm
Opacity:	86%
Media color:	Ultra white

 Rolls  Pigment / Dye water based ink



Silk RC

270 gsm

Weight:	270 gsm
Thickness:	260 µm
Opacity:	96%
Media color	Ultra white

 Rolls  Pigment / Dye water based ink



Luster RC

270 gsm

Weight:	270 gsm
Thickness:	250 µm
Opacity:	94%
Media color:	Ultra white

 Rolls  Pigment / Dye water based ink



Fine Art Matt

230 gsm

Weight:	230 gsm
Thickness:	267 µm
Opacity:	86%
Media color:	Ultra white

 Rolls  Pigment / Dye water based ink



**Matt Canvas
Texture**
230 gsm

Weight: 230 gsm

Thickness: 270 µm

Opacity: 95%

Media color: Ultra white

 Rolls  Pigment / Dye water based ink



**Satin RC Duo
Album**
280 gsm

Weight: 280 gsm

Thickness: 260 µm

Opacity: 96%

Media color: Ultra white

 Sheets  Pigment / Dye water based ink

FREE SAMPLES OF SOLUTION DRY LAB PAPERS

The pattern book contains all Solution Dry Lab papers (size: 10x15 cm).

Contact us and get it for free!

Phone: +48 786 180 004, e-mail: office@inkjetsolution.eu



ACCESSORIES FOR DRYLABS

Event Box for DX100/D700/D800



The box is made for transporting printers like the Fujifilm Frontier-S DX100, Epson SureLab SL-D700 or Epson SureLab SL-D800, it is made of a black waterproof multiplex board. Strong due to it's aluminum structure, equipped with built-in wheels and a telescopic handle to ensures safe and comfortable movement of the device.

The interior of the box is covered with a technical foam for a better protection of the device, the exterior is equipped with a power socket and ventilation panels.

The size of the suitcase: width 54 cm, depth 53 cm, height 55 cm.

Solution Print Tray



Solution Print Tray for A4 prints and 10x15 cm pictures.

Compatibility:	Fujifilm Frontier-S DX100
	Epson SureLab SL-D700
	Epson SureLab SL-D800
Capacity:	10 x 15 cm - 50 pcs.
	A4 - 20 pcs.

Solution Order Organizer



Solution Order Organizer is used to store print jobs (format 10x15 cm and 13x18 cm).

In each of the 12 partitions up to 50 photos can be stored, which makes the organization of your customer orders easier.

Capacity: about 1100 prints of the format 10x15 cm or 13x18 cm.

Solution Maintenance Tank



Solution maintenance tank for Fujifilm Frontier-S DX100, Frontier DE100, Epson SureLab SL-D700 and SureLab SL-D800.

Storage Box for prints



White cardboard box with a surface covered with glue for pictures, prints or paintings.

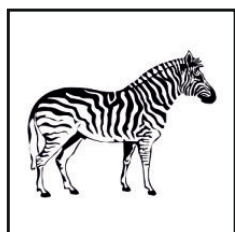
PRINTABLE FOILS AND BACKLIT MATERIALS



Self-adhesive foil
Matt

Weight:	160 gsm
Thickness:	100 µm
Color:	White
Surface:	Matt
Type:	PE
Waterproof:	Yes

 Rolls  Pigment / Dye water based ink



Foil HD
Screen Printing
transparent

Weight:	170 gsm
Surface:	Transparent, glossy
Type:	PET

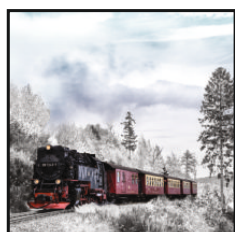
 Rolls  Pigment / Dye water based ink



Blockout foil
for roll-up

Weight:	125 gsm
Surface:	White
Type:	PET

 Rolls  Pigment / Dye water based ink



Backlit

Weight:	215 gsm
Type:	Backlit satin material
Media color:	Ultra white
Material:	100% polyester

 Rolls  Pigment / Dye water based ink



Sublimation paper
matt transfer

Weight:	75 gsm
Type:	Microporous Coated Dye Sublimation Paper

 Sheets  Sublimation ink



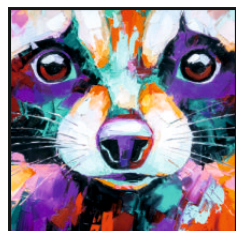
**RI-JET M100 White
Gloss HOP Perm
AIRFLOW N**
134 gsm

Weight: 134 gsm
Thickness: 100 µm
Media color: Gloss white
Material: Monomeric vinyl
Rolls Eco-solvent / UV / Latex ink



**RI-JET M100 White
Matt Rem
AIRFLOW N**
134 gsm

Weight: 134 gsm
Thickness: 100 µm
Media color: Matt white
Material: Monomeric vinyl
Rolls Eco-solvent / UV / Latex ink



**RI-JET Paper
Wall 260 Perm N**
260 gsm

Weight: 260 gsm
Thickness: 400 µm
Media color: White
Material: Coated embossed paper
Rolls Eco-solvent / UV / Latex ink



**RI-MARK Etched
Glass PTAS Dark
Silver PERM SB N**
110 gsm

Weight: 110 gsm
Thickness: 80 µm
Media color: Matt, frosted
Material: Polymeric vinyl
Rolls



**RI-MARK Etched
Glass PTF Dusted
Perm SB**
110 gsm

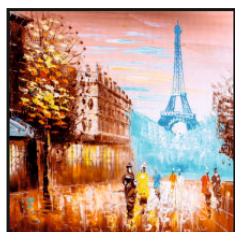
Weight: 110 gsm
Thickness: 80 µm
Media color: Matt, dusted
Material: Translucent polymeric vinyl
Rolls

ECO-SOLVENT, UV, LATEX MATERIALS



Canvas
Polyester Matt
280 gsm

Weight: 280 gsm
Thickness: 400 µm
Media color: Ultra white
Material: 100% polyester
Rolls Eco-solvent / UV / Latex ink



Canvas
Polyester Glossy
280 gsm

Weight: 280 gsm
Thickness: 420 µm
Media color: Ultra white
Material: 100% polyester
Rolls Eco-solvent / UV / Latex ink



Canvas
Polyester Matt
Adhesive
400 gsm

Weight: 400 gsm
Thickness: 380 µm
Media color: White
Material: 100% polyester
Rolls Eco-solvent / UV / Latex ink

FREE SAMPLES OF ECO-SOLVENT, UV, LATEX MATERIALS

The pattern book contains Solution eco-solvent, UV, latex materials.

Contact us and get it for free!

Phone: +48 786 180 004, e-mail: office@inkjetsolution.eu



OVER-LAMINATES













Solution Over-Laminates are universal laminates designed to protect inkjet prints from the damaging effects of UV rays, mechanical damage and dust.

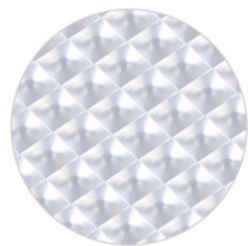
With the Solution laminates you can get many different effects to the surface of the prints depending on the type of application.

In addition to the ability to give a specific, attractive appearance, it also protects prints from fading, scratches and fingerprints.

Laminates can be applied cold by hand with a felt squeegee or with laminating machines.

 Glossy	<p>Standard over-laminate with a glossy surface.</p> <table><tr><td>Film Thickness:</td><td>400 µm</td></tr></table> <p> Rolls  Sheets</p>	Film Thickness:	400 µm
Film Thickness:	400 µm		
 Super Glossy	<p>Very thick over-laminate with a super glossy surface. This laminate has an protective layer, which has to be removed after application.</p> <table><tr><td>Film Thickness:</td><td>180 µm</td></tr></table> <p> Rolls</p>	Film Thickness:	180 µm
Film Thickness:	180 µm		
 Super Glossy Glitter	<p>Very thick over-laminate with glossy surface and small glitter parts inside. This laminate has an protective layer, which has to be removed after application.</p> <table><tr><td>Film Thickness:</td><td>200 µm</td></tr></table> <p> Rolls</p>	Film Thickness:	200 µm
Film Thickness:	200 µm		
 Matt	<p>Standard over-laminate with matt surface.</p> <table><tr><td>Film Thickness:</td><td>400 µm</td></tr></table> <p> Rolls  Sheets</p>	Film Thickness:	400 µm
Film Thickness:	400 µm		

OVER-LAMINATES



3D Effect

An over-laminate with 3D effect, lets the subject comes out of the picture.

Film thickness: 400 µm

 Sheets



Soap Bubbles

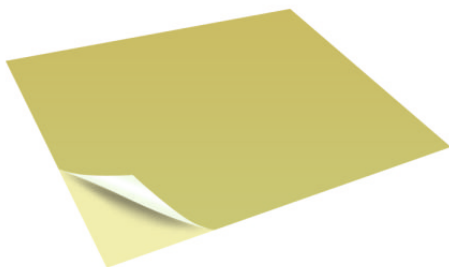
An over-laminate with soap bubbles effect, for very special pictures. Definitely an eye-catcher with an optical 3D effect.

Film Thickness: 100 µm

 Rolls  Sheets

GLUES

Double-sided glue



Sheets and rolls of double-sided adhesive, firmly adhering glue.

Face mounting glue



Sheets and rolls of two-sided adhesive, firmly adhering, crystal clear glue for face mounting pictures on glass or plexiglass.

FOAM BOARDS AND ACCESSORIES

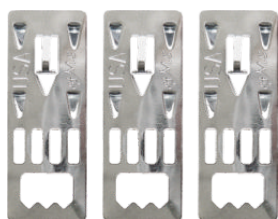
Solution Foam Boards



Foam Board is ideal for cold mounting photos, artwork, internal displays and presentations onto foam board. It is an alternative to traditional methods of mounting prints.

Variant:	Standard, Ultra strong
Color:	white and black
Thickness:	3 mm, 5 mm, 10 mm
Type:	with and without glue

Crocodile Pendants



Crocodile Pendants for mounting prints, foam boards, frames on the wall.

Felt Squeegees



Felt Squeegees for mounting wallpapers, prints, over-laminates on foam boards, walls or other flat surfaces.

Cutting knives



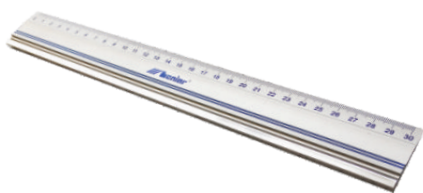
Professional knives to cut foam boards, prints, over-laminates and foils.

Foam Board Notching Cutter



Designed for cutting foam boards with a thickness of 5 mm, allows to obtain an incision with an angle of 90° or 120°.

Metal ruler



Professional ruler for straight and clean cuts on foam boards, prints and foils.

Ruler with knife



Ruler with integrated cutter for precise cutting of photographic paper.

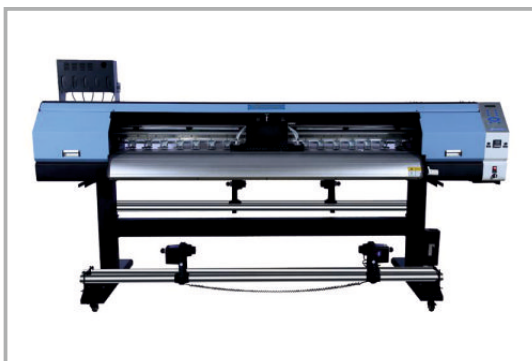


Cleaning kit

Cleaning kit includes a cloth and white material gloves. Very useful to keep the prints clean and to avoid fingerprints on the prints.

PRINTERS - NEW AND USED

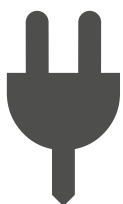
You can choose between new and used small and large format, water-based, eco-solvent, UV printers and drylabs. In our offer you will find printers from Canon, Epson, Fujifilm, Roland, Mutoh and Mimaki.



DRYLAB AND LARGE PRINTER SERVICE



We have many years of experience
in the repair process of printers proved by acquired certificates.



Installation



Color
Calibration



Technical
assistance



Repair



Printers
and parts



CUSTOMIZED CARTRIDGES

All our Solution single use cartridges can be customized to your special needs. Just specify your printer model and the required type or color of ink.



PRIVATE BRAND

All our Solution consumables can become your private label products - with your logo, design and the language you need.



RECYCLING

Protect the environment! Do not throw your cartridges away - Sell them to us! www.falter.eu/eco.



SAVINGS

Switch to Solution branded consumables and save more than 60% of your current printing costs.



ICC PROFILES

ICC profiles to all Solution media are being supplied. Individual ICC profile for the customer's printer are being provided as well.



TRAINING COURSES

We regularly organizes training courses in the field of printing, calibration, maintenance and the usage of wide format printers and drylabs.

If you are interested, don't hesitate to contact us!

Phone: +48 786 180 004, e-mail: office@falter.eu

HISTORY OF FALTER LTD.

1988	Registration of the FOTO-FALTER company
1994	Representative contract with KONICA INC. later KONICA MINOLTA
2002	Entering the inkjet market
2005	Creating our own product brand SOLUTION
2006	Change of the company name to FALTER with logotype rebranding
2008	Sole representative contract for HAHNEMÜHLE FINEART papers
2011	Introduction of SOLUTION pigment inks
2013	Entering the fine art market with SOLUTION FINE ART papers
2014	Sole representative contract for AWAGAMI papers
2015	Introduction of SOLUTION DRY LAB papers and inks
2016	Accredited partner of CANON
2017	Launching a recycling campaign for used cartridges
2020	Introduction of SOLUTION DTG inks

All trademarks are the property of their respective owners

CONTACT US

Management:

Marek Piechowiak

Owner

E-mail: marek.piechowiak@falter.eu

Anna Cieśla

CEO

E-mail: anna.ciesla@falter.eu



Sales department:

Poland:

Phone: +48 663 970 221

Phone: +48 663 970 232

Phone: +48 663 970 233

E-mail: biuro@falter.eu

Europe:

Phone: +48 786 180 004

Phone: +48 786 180 002

E-mail: office@falter.eu

Service:

E-mail: service@falter.eu

Marketing:

E-mail: marketing@falter.eu

Head office:

Phone: +48 61 29 38 300

E-mail: office@falter.eu

Falter Sp. z o. o.

ul. Poznańska 69

62-045 Pniewy/Poland

Our websites:

www.falter.eu

www.inkjetsolution.eu

www.drylab.pl

[facebook/FalterEurope](https://facebook.com/FalterEurope)

[youtube/FalterSpzoo](https://youtube.com/FalterSpzoo)

Falter Sp. z o.o.

ul. Poznańska 69
62-045 Pniewy / Poland

Phone: +48 61 29 38 300
www.inkjetsolution.eu

E-mail: office@falter.eu
www.falter.eu

