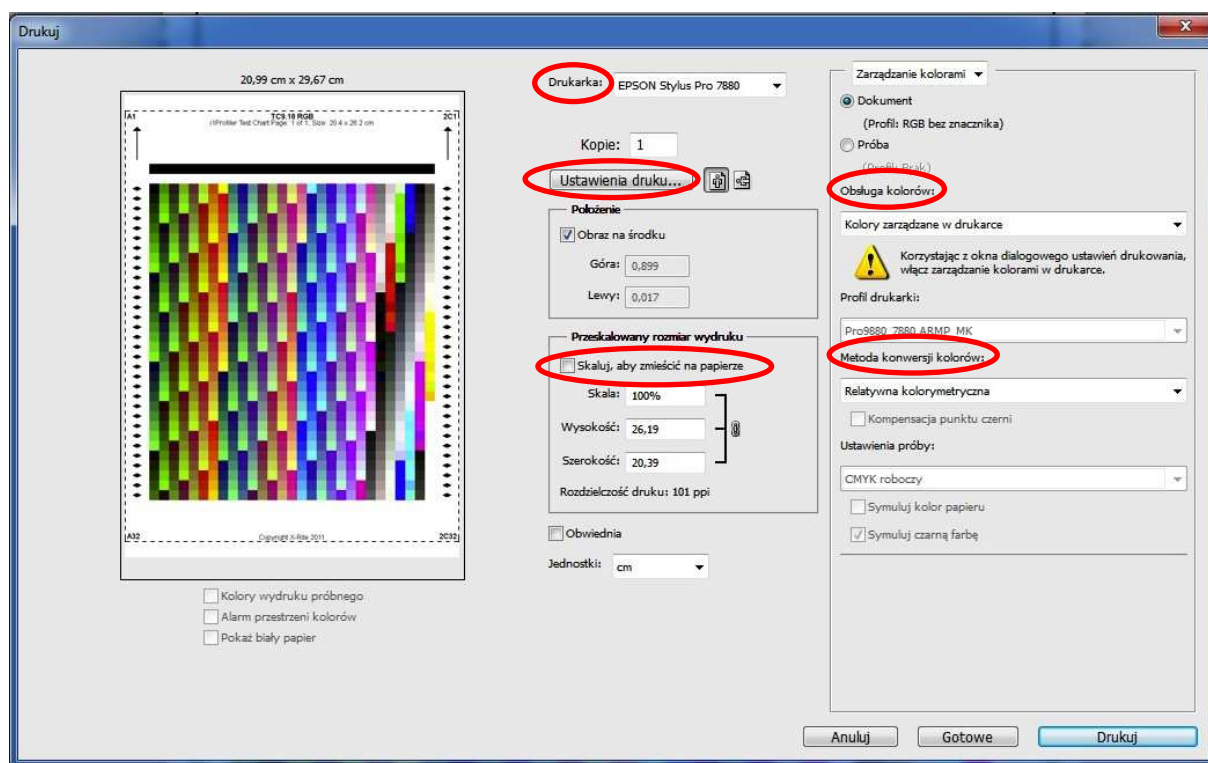


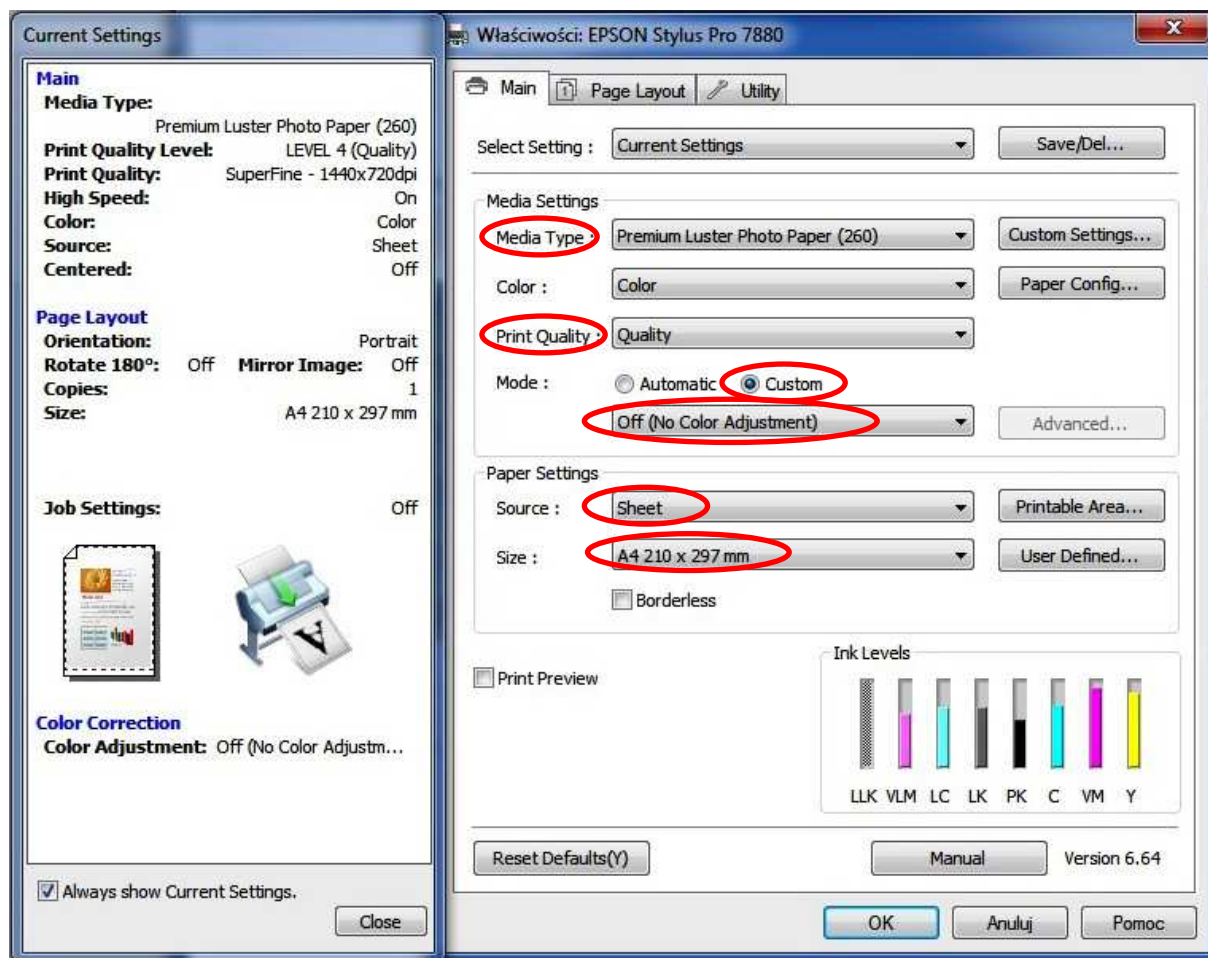
HOW TO RECEIVE THE CORRECT ICC PROFILE

1. Print the file TC9.18.RGB* on the print medium to which you would like to receive ICC profile. Pay your attention on the driver settings, it is very important! :

- a) Choose the correct printer
- b) Do not scale the print to the sheet, the file is adapted to A4 size. If you receive the information that the file is too big, please just ignore it.
- c) Color support: OFF
or in Photoshop CS-5 and higher versions: management in the printer
- d) The color conversion method:
 - for canvas and matt papers: PERCEPTUAL
 - for microporous papers and fine art: RELATIVE COLORIMETRIC
- e) -> go to the page settings



* For DryLab printers and paper width of 15.2 mm, use files **TC9.18.RGB DryLab**. Print each of the three files choosing the paper size of 152 x 210 mm.



a) Media Type: depending on the selected paper, you have to set the correct media type. The table below will help you to choose the correct settings. It is very important to set the same media type in the printer!

	BLACK	Media type
LUSTER RC	PK	Premium Luster Photo Paper (260)
SEMI MATT RC	PK	Premium Semimatte Photo Paper (260)
SEMI MATT RC WARMTONE	PK	Premium Semimatte Photo Paper (260)
GLOSSY RC	PK	Premium Glossy Photo Paper (260)
PAERL RC	PK	Premium Luster Photo Paper (260)
METALLIC RC	PK	Premium Glossy Photo Paper (260)
MATT	MK	Doubleweight Matte Paper
GLOSSY PHOTO	PK	Premium Photo Paper Glossy
CANVAS MATT WARMTONE	MK	Canvas / Velvet Fine Art Paper
CANVAS MATT	MK	Canvas / Velvet Fine Art Paper
CANVAS GLOSSY	PK	Canvas Glossy / Premium Luster Photo Paper (260)
CANVAS POLYESTER	MK	Doubleweight Matte Paper

BACKLIT	MK	Singleweight Matte Paper
FOIL SEFADHESIVE	MK	Doubleweight Matte Paper
GLACIER	PK	Premium Luster Photo Paper (260)
SILK	PK	Premium Luster Photo Paper (260)
SATIN	PK	Premium Luster Photo Paper (260)

Solution FINE ART	BLACK	Media type
Photo White 270gsm	MK	UltraSmooth Fine Art Paper
Radiant White 270gsm	MK	UltraSmooth Fine Art Paper
White Velvet 270gsm	MK	UltraSmooth Fine Art Paper
Toscana 210gsm	MK	Textured Fine Art Paper
Watercolour 240gsm	MK	Textured Fine Art Paper
Photo White Satin 270gsm	MK	UltraSmooth Fine Art Paper
Baryta 300gsm	PK	Premium Luster Photo Paper (260)

MK: matte black, PK: photo black

- b) Color: Color
- c) Print Quality: Quality
- d) Mode: Custom -> **Off (no color adjustment) !!**
- e) Source: Sheet

!!! Please, describe the print on the back with below information:

- Printer type: *for example Epson Stylus Pro 4880*
- Ink type: *for example Solution Premium*
- Paper/canvas/foil type : *for example Matt paper*
- The name of the company: *for example Fotolab AGA*

Please, send the print in the rigid A4 envelope with the description: ICC PROFILE do not bend, on the address:

Falter Sp. z o.o
ul. Poznanska 69
62-045 Pniewy/POLAND

After receiving your print, we created an ICC Profile. The profile is sent to you by e-mail.



Important: After unpacking and uploading our ICC Profile, it is recommended to make test print to check if everything works correctly.

Installation Profile in Windows system: Use right mouse button to click on Profile and choose „install Profile”

Installation in OSX system: Install Profile in this place: System/libraries/ColorSync/Profiles

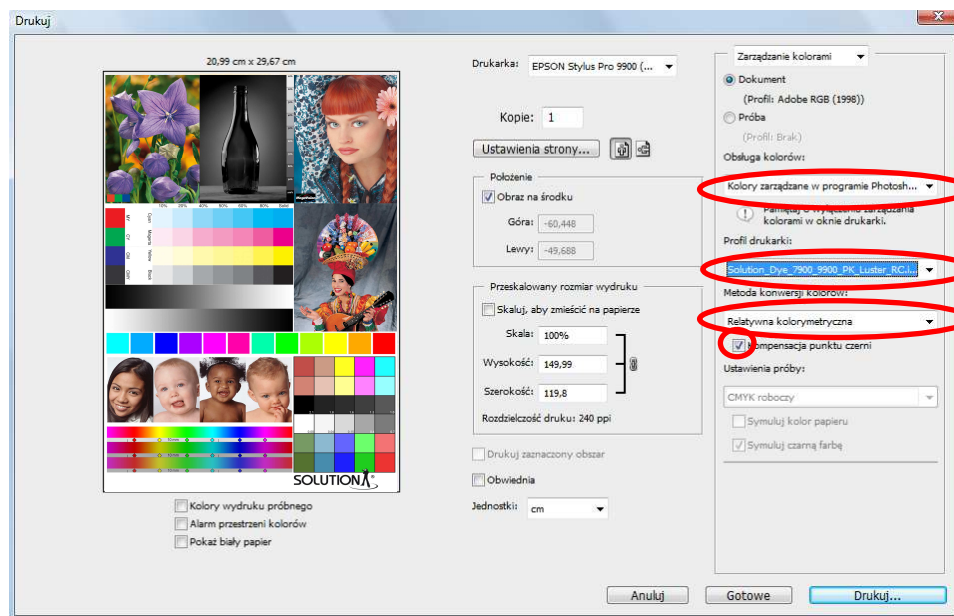
TEST PRINT

Driver settings stay the same, with the exception of „color support”. Here you have to choose: “Color management in Photoshop”, and choose your new ICC profile.

The colors conversion method:

- for canvas and matt papers: PERCEPTUAL
- for microporous papers and fine art: RELATIVE COLORIMETRIC

BLACK POINT COMPENSATION: ticked



If you are not sure whether your test print is correct, please contact us and we will send you the reference print. (e-mail: office@inkjetsolution.eu or phone: +48 786 180 004)