

## How to set ICC profiles in a dry-lab printer

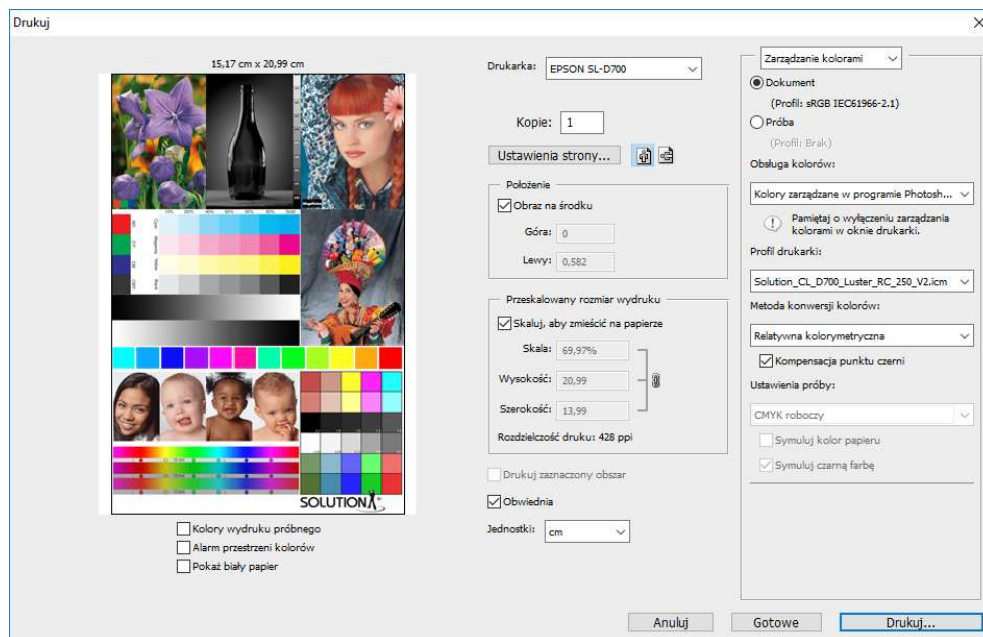
### 1. If you use Adobe Photoshop

Open the print window

Set your printer

In the Color Management set: **Photoshop Manages Color**

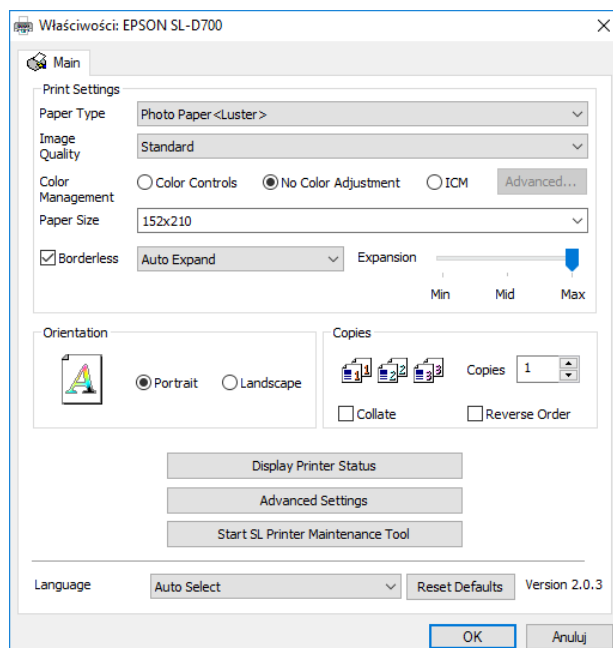
Chose your printer profile



Click the **Printer Setup** button.

In the printer dialog box chose your paper type, image quality, and set **No Color Adjustment**.

click the **OK** button



Click the **Print** button

## 2. If you use another software

In this case all settings you do set in the printer driver.

Choose the control panel

Choose devices and printers

Click the right mouse button at your printer icon and chose the **printer settings**.

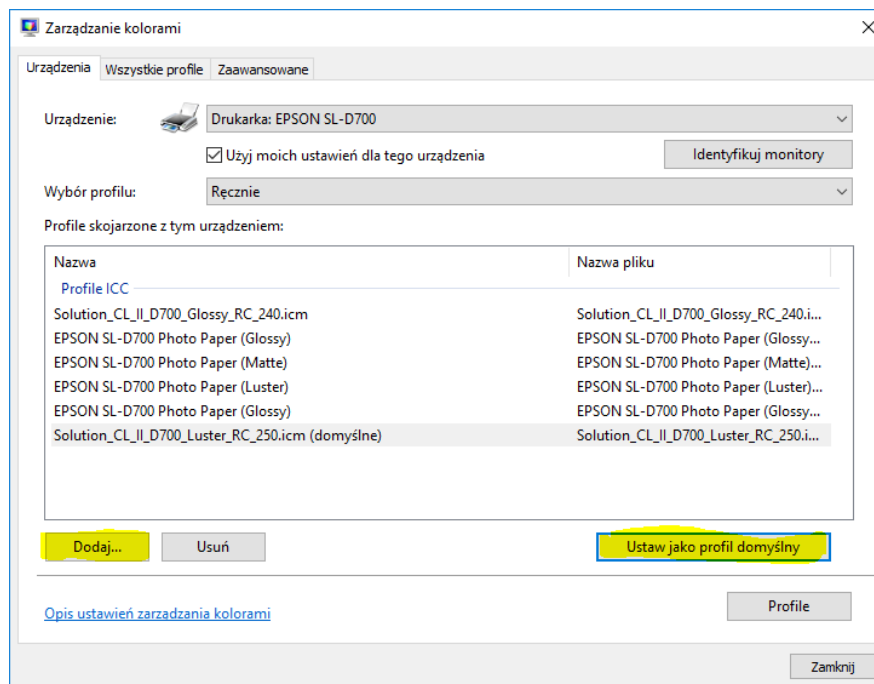
Click the **Color Management** tab, and please confirm your choice.

Set your printer and set the profile selection as **Manually**.

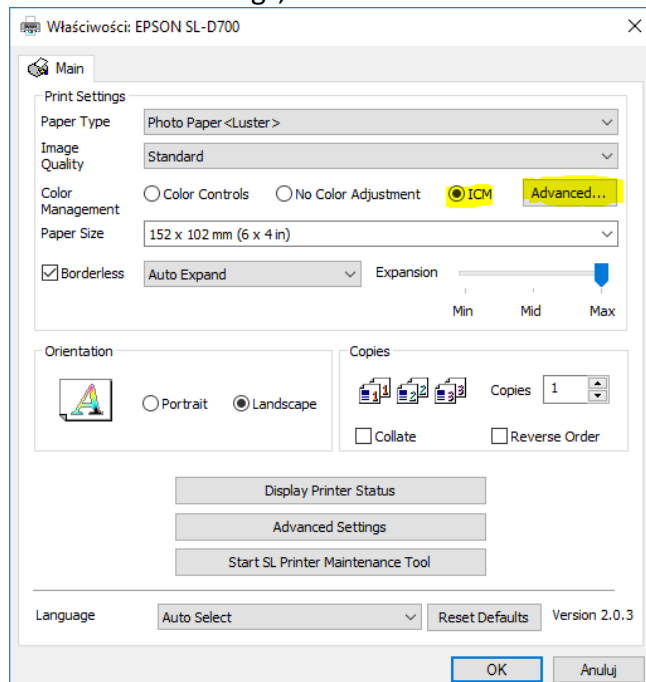
Click the **Add** button to add your profile.

After this set as the **Default Profile**.

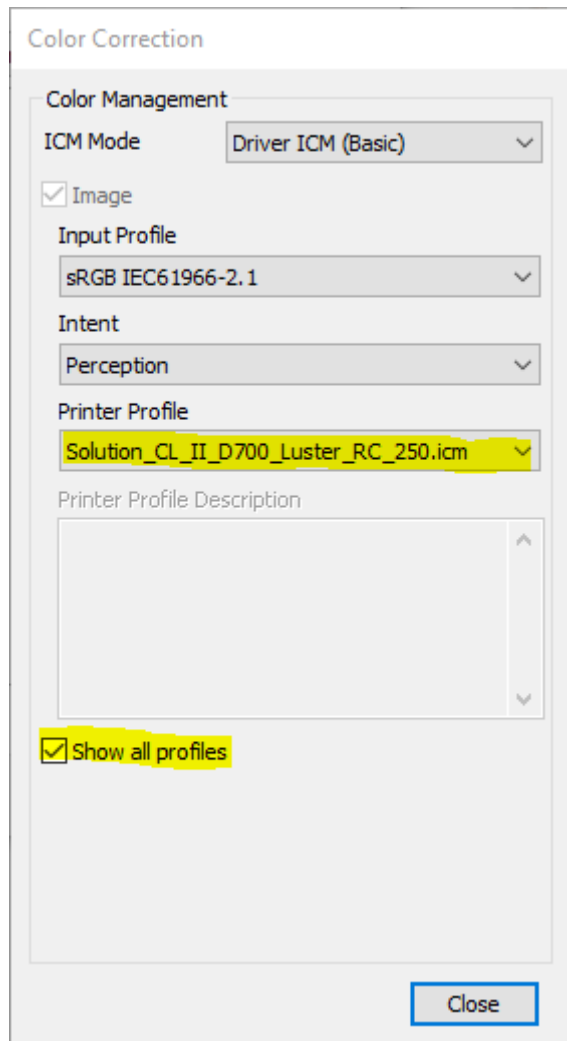
Close the window



In the driver settings, chose the **ICM** and click the **Advanced** button



In the next window set the check box: **show all profiles** and chose the right profile.  
Close the window.



After this, set the other settings and click **OK**.

3. If you want to add a profile to your OS, click the right mouse button at the name of profile and chose **Install profile**.

If you have any questions, do not hesitate to contact us.

E-Mail: office@inkjetsolution.eu  
Phone Europe: 0048 786180004  
Phone Germany: 0049 15754927540  
www.inkjetsolution.eu